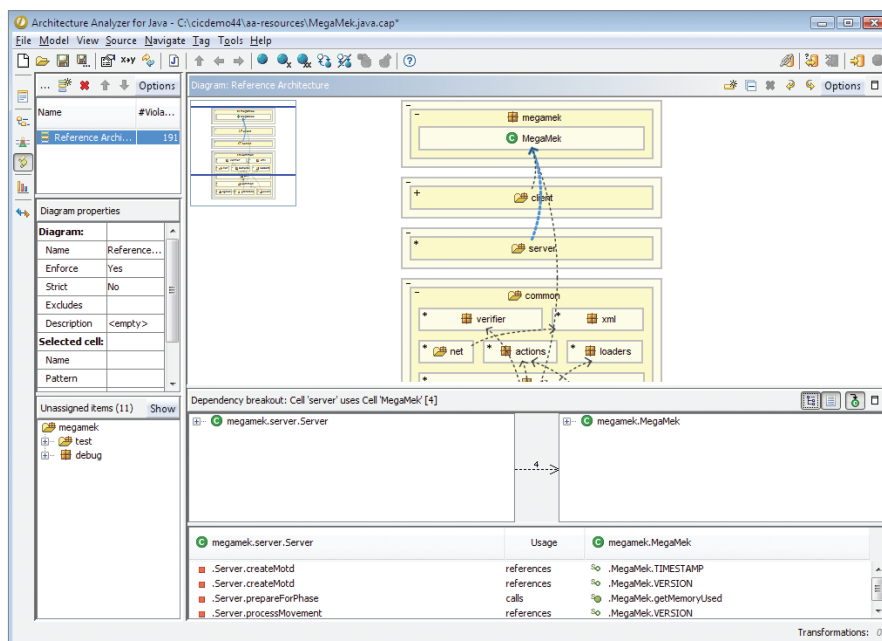


Coverity® Architecture Analysis

Coverity Architecture Analysis visualizes architectural structure and dependencies in large, C/C++ and Java code bases. Architecture Analysis provides actionable information that allows you to meet the challenges of building today's complex software, speed development cycles, and protect investments in your code base.



Improve Software Integrity with Coverity Architecture Analysis

- Create a comprehensive visual map of complex architectures including all relationships and dependencies
- Automatically detect design rule violations
- Identify excess complexity including cyclic dependencies and cyclomatic complexity
- Browse function, class, module, component dependency graphs
- Use “auto-partitioning” to find the hidden structure in large graphs
- View dependency graphs as diagrams or matrices
- Analyze slices through your code-base at class, folder or design levels
- Find unused code clusters at any level

Enforce design rules to design specifications and set standards to manage code complexity.

Key Features

Code Change Management

Improve code change management by establishing and enforcing policies for defining and controlling software architecture changes. Determine the impact of changes before committing them.

Architectural Security Enforcement

Detect, triage and resolve architectural flaws that create security exposures so developers can be sure they are building on a secure foundation.

Manage Code Complexity

Identify code architecture complexities which should be simplified to reduce technical debt and assist in development and refactoring. Reducing code complexity lowers the cost of ownership by increasing maintainability and reducing defects.

Design Rule Enforcement

Gain structural visibility that helps architects and developers ensure that design specifications do not degrade over time and unwanted dependencies are not introduced during development that could introduce risk to quality and security.

Improve Visibility

Understand legacy code bases that lack documentation. Visualize all relationships and dependencies of the software components.

Benefits of Coverity Architecture Analysis

- Understand quickly the existing hierarchy and dependencies of large, complex code bases
- Identify areas of excessive complexity which will be hard to change and vulnerable to defects
- Define and enforce architectural design rules to ensure that unwanted dependencies are not introduced during development
- Determine the impact of changes before committing them
- Understand legacy code bases that lack documentation
- Lower the cost of ownership by increasing maintainability and reducing defects

Technical Specifications

Coverity Architecture Analysis		
Supported Platforms	Supported Languages	System Requirements
<ul style="list-style-type: none"> • Windows • Linux 	<ul style="list-style-type: none"> • C/C++ • Java 	<ul style="list-style-type: none"> • Coverity Static Analysis • 512 MB of RAM • 1 GB of free HD space

For More Information:
sales@coverity.com

Coverity Inc. Headquarters
185 Berry Street, Suite 1600
San Francisco, CA 94107 USA

U.S. Sales: (800) 873-8193
International Sales: +1 (415) 321-5237
www.coverity.com